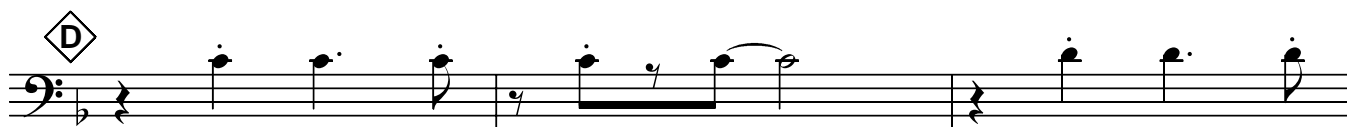
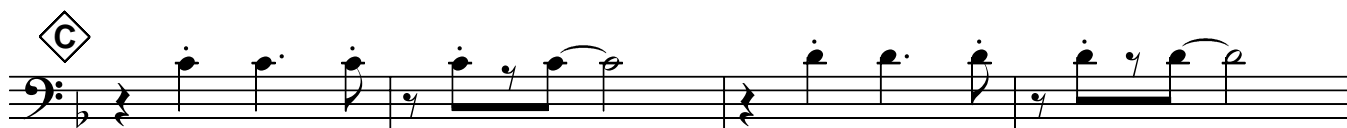
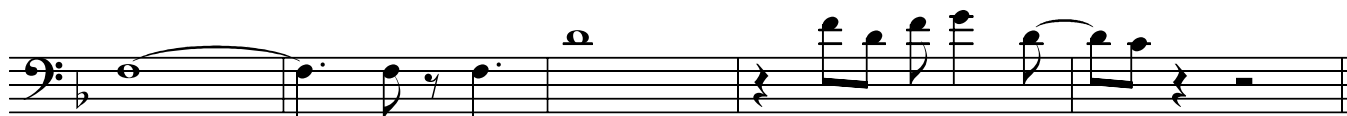
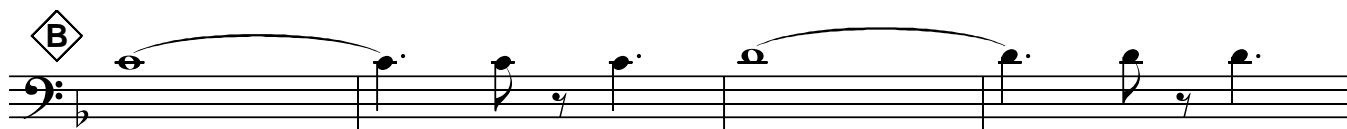
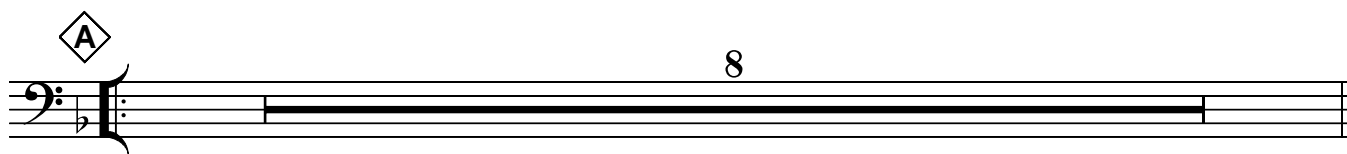
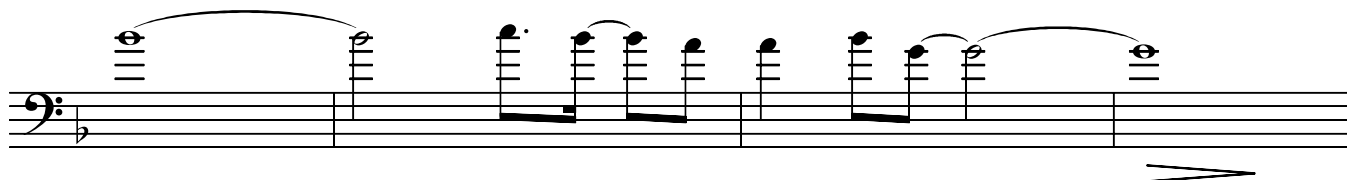
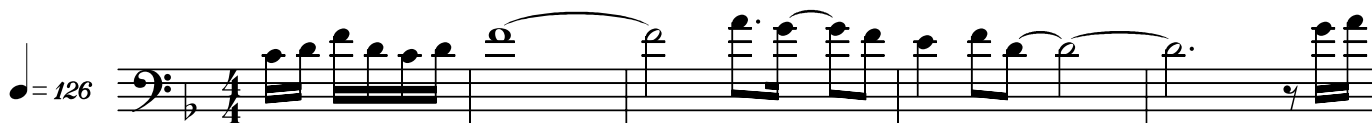


Wohin Du auch gehst

Posaune

Arr.: Christian Schmelzer

Olaf Berger



Salto Musikverlag & Produktion
Christian Schmelzer
Lichtensteinstraße 3 - 73663 Berglen
Phone: 07181-7890 - Mail: mail@arrangeur.com
Web: <http://www.arrangeur.com>

First musical staff in bass clef, key of B major, 4/4 time. It begins with a quarter rest followed by a quarter note G2, a quarter note A2, and a half note B2. The second measure contains a quarter note G2, a quarter note A2, and a half note B2. The third measure contains a quarter note G2, a quarter note A2, and a half note B2.

Second musical staff in bass clef, key of B major, 4/4 time. It features a first ending bracket over the first two measures and a second ending bracket over the last two measures. The first ending consists of a quarter note G2, a quarter note A2, and a half note B2. The second ending consists of a quarter note G2, a quarter note A2, and a half note B2.

Third musical staff in bass clef, key of B major, 4/4 time. It begins with a diamond-shaped chord symbol 'E' above the staff. The first measure contains a quarter note G2, a quarter note A2, and a half note B2. The second measure contains a quarter note G2, a quarter note A2, and a half note B2. The third measure contains a quarter note G2, a quarter note A2, and a half note B2. The fourth measure contains a quarter note G2, a quarter note A2, and a half note B2.

Fourth musical staff in bass clef, key of B major, 4/4 time. It begins with a quarter note G2, a quarter note A2, and a half note B2. The second measure contains a quarter note G2, a quarter note A2, and a half note B2. The third measure contains a quarter note G2, a quarter note A2, and a half note B2. The fourth measure contains a quarter note G2, a quarter note A2, and a half note B2.

Fifth musical staff in bass clef, key of B major, 4/4 time. It begins with a diamond-shaped chord symbol 'F' above the staff. The first measure contains a quarter note G2, a quarter note A2, and a half note B2. The second measure contains a quarter note G2, a quarter note A2, and a half note B2. The third measure contains a quarter note G2, a quarter note A2, and a half note B2. The fourth measure contains a quarter note G2, a quarter note A2, and a half note B2.

Sixth musical staff in bass clef, key of B major, 4/4 time. It begins with a quarter note G2, a quarter note A2, and a half note B2. The second measure contains a quarter note G2, a quarter note A2, and a half note B2. The third measure contains a quarter note G2, a quarter note A2, and a half note B2. The fourth measure contains a quarter note G2, a quarter note A2, and a half note B2.

Seventh musical staff in bass clef, key of B major, 4/4 time. It begins with a diamond-shaped chord symbol 'G' above the staff. The first measure contains a quarter note G2, a quarter note A2, and a half note B2. The second measure contains a quarter note G2, a quarter note A2, and a half note B2. The third measure contains a quarter note G2, a quarter note A2, and a half note B2. The fourth measure contains a quarter note G2, a quarter note A2, and a half note B2.

Eighth musical staff in bass clef, key of B major, 4/4 time. It features a first ending bracket over the first two measures and a second ending bracket over the last two measures. The first ending consists of a quarter note G2, a quarter note A2, and a half note B2. The second ending consists of a quarter note G2, a quarter note A2, and a half note B2.

Ninth musical staff in bass clef, key of B major, 4/4 time. It begins with a quarter note G2, a quarter note A2, and a half note B2. The second measure contains a quarter note G2, a quarter note A2, and a half note B2. The third measure contains a quarter note G2, a quarter note A2, and a half note B2. The fourth measure contains a quarter note G2, a quarter note A2, and a half note B2.